

KillTest

質量更高 服務更好



學習資料

<http://www.killtest.net>

一年免費更新服務

Exam : **000-605**

Title : IBM WebSphere Enterprise
Service Bus V7.0,Integration
Development

Version : Demo

1.An integration developer has been tasked to develop a mediation module that integrates a legacy J2EE application deployed on a remote server. The legacy application is exposed through an EJB facade and the integration developer decides to use an EJB import. What is the most suitable approach to configure it?

The integration developer should:

- A. add the corresponding EJB client project to the module dependencies and select the EJB local interface for the import.
- B. import the corresponding EJB client project into the workspace and select the EJB remote interface for the import.
- C. create a WSDL interface with the same operations as the EJB interface, select it as the import interface and add the EJB JNDI Name in the binding section.
- D. use the external service wizard to point to the EJB through its IIOP URL and the wizard automatically creates the interface and the business objects for the import.

Answer: B

2.A mediation module must be designed to participate in a transaction initiated by a client component.

Which of the following settings should be used by the integration developer to meet the transaction requirements for the mediation module?

- A. Set the Transaction qualifier to False and the Join transaction qualifier to True.
- B. Set the Transaction qualifier to Global and the Join transaction qualifier to True.
- C. Set the Transaction qualifier to Local and the Join transaction qualifier to False.
- D. Set the Transaction qualifier to True and the Join transaction qualifier to True.

Answer: B

3.An integration developer is developing a mediation flow component to integrate PeopleSoft Enterprise.

The integration developer has identified WebSphere Adapter for PeopleSoft Enterprise for this integration.

Which technology specification is implemented by this adapter?

- A. Java EE Connector Architecture (JCA)
- B. Java EE Component Architecture (JCA)
- C. Java EE Connectivity Architecture (JCA)
- D. Java EE Communication Architecture (JCA)

Answer: A

4.An integration developer wants to access a database table on a DB2 database installed on an AIX system using a JDBC Adapter. Using the configuration wizard of the JDBC Outbound Adapter import, the integration developer is prompted for JAR files. Which kind of JAR files are required?

- A. AIX specific JAR files
- B. JDBC standard JAR files
- C. DB2 specific JAR files
- D. DB2 and AIX specific JAR files

Answer: C

5.An integration developer is developing a mediation flow component using WebSphere Adapters. It is observed that the events are being delivered by multiple threads on several channels simultaneously.

What type of event delivery mechanism is used?

- A. Ordered
- B. Unordered
- C. Persistent
- D. Non-persistent

Answer: B

6. An integration developer is developing a mediation module using the WebSphere Integration Developer. The mediation module interacts with different databases, via the database lookup mediation primitive and an Enterprise Information system (EIS) binding. It is expected that during the lifetime of this solution, the databases connection details will change. The customer wants to avoid downtime of the applications as much as possible. What is the BEST way for the integration developer to implement a solution so that when database connection details change, downtime is minimized?

- A. Update the details of the database connections, then deploy the updated EAR file.
- B. Define the various database connection details as WebSphere Variables. When a change in the connection details occurs, update the WebSphere Variables on the server and restart the server.
- C. Define the various database connections used as JNDI names. When a change in the connection details occurs, update the JNDI details on the server and restart the application.
- D. Define a properties file for the application to load on startup. When a change in the connection details occurs, update the details in the properties file and restart the application.

Answer: C

7. A client wants to invoke a mediation module that contains a mediation flow. Which of the following export bindings with Request-Response interface will ensure that the mediation flow is invoked asynchronously with callback by the client?

- A. HTTP
- B. Web services (SOAP/JMS)
- C. Web services (SOAP/HTTP)
- D. WebSphere MQ or WebSphere MQ-JMS

Answer: D

8. Refer to the Exhibits.

Exhibit A

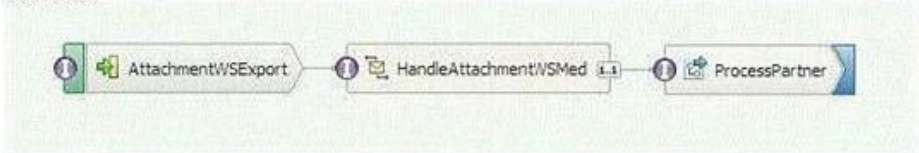
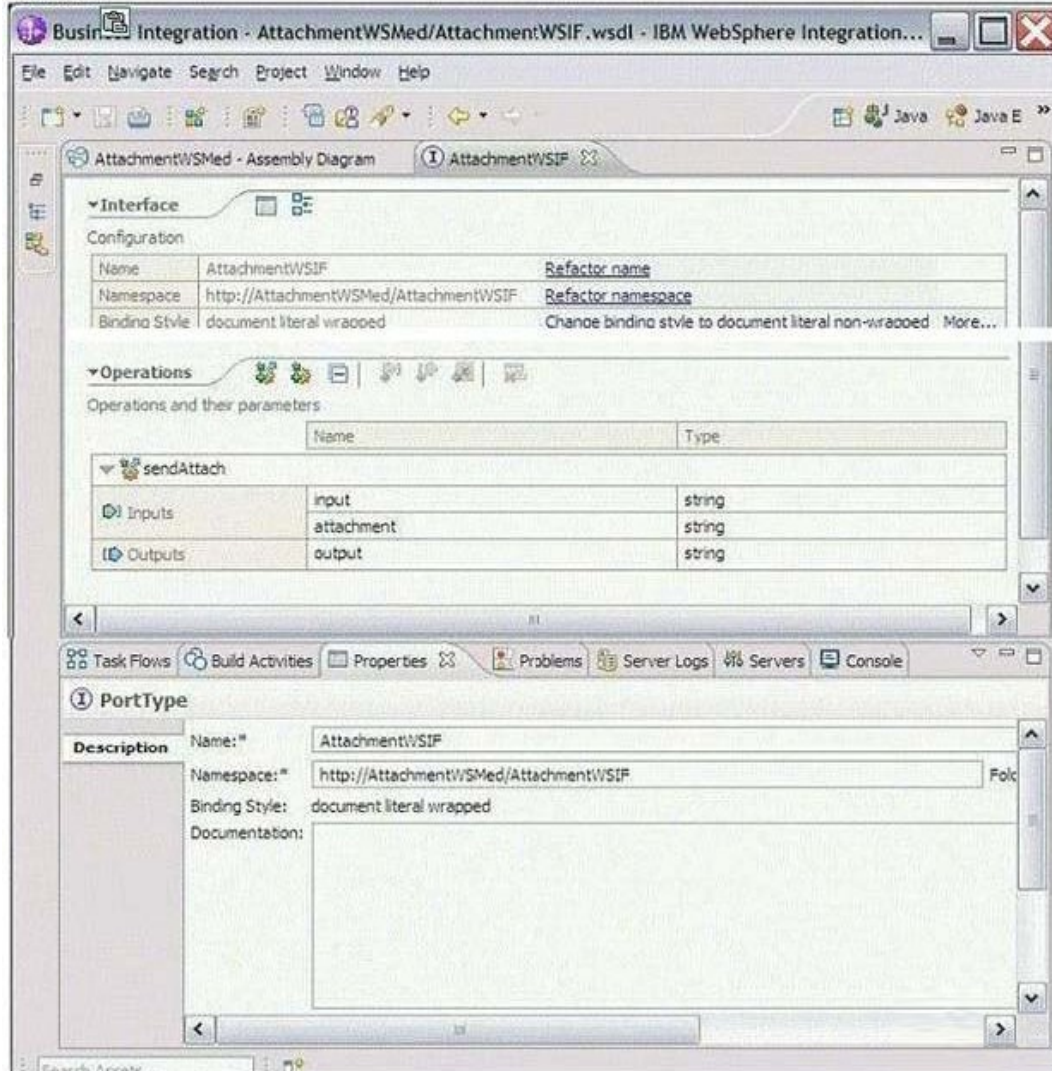


Exhibit B



An integration developer needs to implement an application to manage the reception of resumes for a job application. The application must allow the applicant to attach a photo in jpeg format. The integration developer decides to create a mediation module exposed through a Web Service Export binding using SOAP with Referenced Attachments to save the photo to a database and send the rest of the data to a business process for further processing. Exhibit A shows the assembly diagram of the mediation module. Exhibit B shows the interface of the Export component of the mediation module in the interface editor. Which actions does the integration developer need to execute in the interface editor above, in order to correctly configure the Web Service Export binding to handle SOAP with Referenced Attachments?

- A. Leave the binding style to 'document literal wrapped', change the 'attachment' input type to 'base64Binary'.
- A. Leave the binding style to 'document literal wrapped', change the 'attachment' input type

to 'base64Binary'.

B. Leave the binding style to 'document literal wrapped', change the 'attachment' input type to 'hexBinary', add in the Property editor the binary content type field 'image/jpeg' for the 'attachment' input.

C. Leave the binding style to 'document literal wrapped', change the 'attachment' input type to 'hexBinary', add in the Property editor the binary content type field 'image/jpeg' for the 'attachment' input.

D. Leave the binding style to 'document literal wrapped', change the 'attachment' input type to 'hexBinary', add in the Property editor the binary content type field 'image/jpeg' for the 'attachment' input.

E. Change the binding style to 'document literal non wrapped', change the 'attachment' input type to 'hexBinary'.
 C. Change the binding style to 'document literal non wrapped', change the 'attachment' input type to 'hexBinary'.

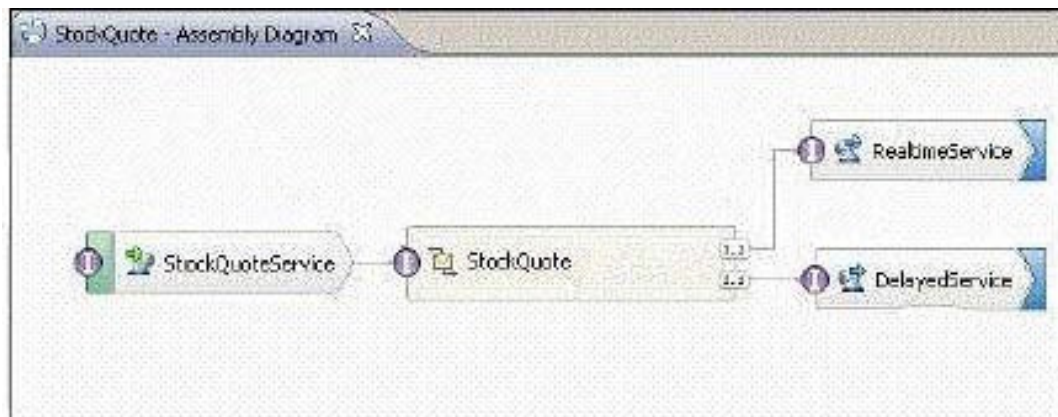
F. Change the binding style to 'document literal non wrapped', change the 'attachment' input type to 'hexBinary', add in the Property editor the binary content type field 'image/jpeg' for the 'attachment' input.

G. Change the binding style to 'document literal non wrapped', change the 'attachment' input type to 'hexBinary', add in the Property editor the binary content type field 'image/jpeg' for the 'attachment' input.

H. Change the binding style to 'document literal non wrapped', change the 'attachment' input type to 'hexBinary', add in the Property editor the binary content type field 'image/jpeg' for the 'attachment' input.

Answer: F,G,H

9.Refer to the Exhibit.



The Assembly Diagram represents an existing StockQuote mediation module. The mediation module must be enhanced to create a record in a billing system whenever a stock quote is executed. What must be done to the Assembly Diagram to implement the enhancement?

A. Add a newBillingService import with an appropriate interface.
 Add a new reference to the StockQuote mediation flow component.
 Wire the new reference to the new BillingService import.

B. Add a newBillingService export with an appropriate interface.
 Add a new reference to the StockQuote mediation flow component.
 Wire the new reference to the new BillingService export.

C. Add a newBillingService import with an appropriate reference.
 Add a new interface to the mediation flow component.
 Wire the new interface to the new BillingService import.

D. Add a newBillingService export with an appropriate reference.
 Add a new interface to the mediation flow component.
 Wire the new interface to the new BillingService export.

Answer: A

10.The integration developer has an existing mediation flow that was developed using WebSphere Integration Developer V6.2. The developer would like to take advantage of functionality in new mediation primitives of WebSphere Integration Developer V7.0 to enhance the mediation flow design. What should the integration developer do to migrate project artifacts from WebSphere Integration Developer V6.2 to WebSphere Integration Developer V7.0? From WebSphere Integration Developer V6.2, export the artifacts:

- A. into a JAR file.Import the JAR file into the WebSphere Integration Developer V7.0, which will automatically migrate the project.
- B. as an EAR file.Import the EAR file into WebSphere Integration Developer V7.0, which will automatically migrate the project.
- C. into a Project Interchange (PI) file. Import the PI file into WebSphere Integration Developer V7.0. Then use the migration wizard to complete the process.
- D. into an Eclipse Product.Import the Eclipse file into WebSphere Integration Developer V7.0. Then use the migration wizard to complete the process.

Answer: C

11.A new version of a common business object currently defined in a shared library is required for a new mediation module. Which of the following should be done to ensure that older modules are not immediately affected by the change and both versions of the business object are available to all modules?

- A. Create the new version of the business object using a different name in the shared library.
- B. Create the new version of the business object using the same name in the new mediation module without modifying the shared library or the other mediation modules.
- C. Create the new version of the business object using a different name in the new mediation module without modifying the shared library or the other mediation modules.
- D. Move the old version of the common business object to each existing dependent mediation module, then create the new version of the business object in the new mediation module.

Answer: A

12.An integration developer has deployed different versions of the same SCA module to a server using administrative console. Which of the following statements is TRUE about any subsequently deployed versions of the module?

- A. Previous versions of the module are cached in memory.
- B. Previous versions of the module are overwritten by the new version of the module.
- C. A new version of the module replaces the last version of the module.
- D. A new version of the module does not replace any previous versions of the module.

Answer: D

13.An integration developer has developed a new mediation flow and wants to test it on a new embedded server profile. How should the integration developer proceed in order to perform this testing as efficiently as possible?

- A. Build the EAR file inWebSphere Integration Developer, then deploy it via serviceDeploy on the server.
- B. Build the EAR file inWebSphere Integration Developer, then deploy it via the server's administrative

console.

C. In WebSphere Integration Developer, in the Servers tab, add a new server and enter the connection details of the server.

D. In WebSphere Integration Developer, import the server via File>Import>Server and enter the connection details of the server.

Answer: C

14. An integration developer is using serviceDeploy command to generate J2EE application EAR files from SCA modules. The serviceDeploy command expects an input file in which of the following formats?

A. .gz

B. .jar

C. .rar

D. .tar

E. .zip

Answer: B,E

15. Two integration developers are working on the same mediation module using WebSphere Integration Developer. The module code needs to be merged at the end of each day so that the developers start at the same completion level next day. Which of the following options is the correct way to achieve this with respect to the versioning support in WebSphere Integration Developer? The developers can:

A. continue working on their individual versions of the projects and use 'compare projects' feature at the beginning of each day.

B. continue working on their individual versions of the projects and merge them using a source control tool at the end of each day.

C. maintain multiple versions of the projects in their respective workspaces and use the 'merge projects' feature at the end of each day.

D. maintain multiple versions of the projects in their respective workspaces and use the 'synchronize projects' feature at the end of each day.

Answer: B

16. An integration developer is implementing a custom mediation primitive. The primitive has 3 out terminals configured, Terminal1, Terminal2, and Terminal3. In the custom code, the developer wants to propagate the original service message object (smo) to Terminal2. How should the developer implement this in the code?

A. out.Terminal2(smo);

B. Terminal2.fire(smo);

C. fire(smo,Terminal2);

D. fire.out(smo,Terminal2);

Answer: B

17. An integration developer wants to make some of the properties of the mediation primitives configurable at runtime. Which of the following properties can be promoted to be visible within the Administrative Console (Integrated Solutions Console)?

A. 'Root' of Event Emitter

- B. 'Handler' of Message Logger
- C. 'Table name' of Database Lookup
- D. 'Binding Type' of Endpoint Lookup
- E. 'Invocation Style' of Service Invoke

Answer: C,D

18. An integration developer is designing an XML map that combines the firstName and lastName elements of the source into a single fullName element in the target. In addition, the fullName element must be formatted with the lastName first, followed by a comma and then the firstName.

Which transform type would be the most appropriate for this situation?

- A. Move
- B. Concat
- C. Append
- D. Assign

Answer: B

19. A PurchaseOrder business object and a SalesOrder business object inherit from an abstract Order business object. Both PurchaseOrder and SalesOrder objects require an orderDate property. However, PurchaseOrder requires an orderType property that is not required by SalesOrder. What is the BEST way to model the objects?

- A. Define the orderDate property in the abstract Order
Define the orderType property in PurchaseOrder
- B. Define the orderDate property in the abstract Order
Define the orderType property in the abstract Order
- C. Define the orderDate property in PurchaseOrder and SalesOrder
Define the orderType property in PurchaseOrder
- D. Define the orderDate property in PurchaseOrder and SalesOrder
Define the orderType property in the abstract Order

Answer: A

20. An integration developer is developing a mediation flow and wants to stop the execution of a path in the flow. The developer has to choose between a Stop and a Fail mediation primitive. Which of the following is the correct option to consider while making a choice between the two?

- A. A Stop primitive would stop the execution, throw an exception and may rollback global transactions if configured; a Fail primitive would stop the execution and consume the message silently.
- B. A Stop primitive would stop the execution and consume the message silently; a Fail primitive would stop the execution, throw an exception and may rollback global transactions if configured.
- C. A Stop primitive would stop the execution, throw an exception and consume the message; a Fail primitive would stop the execution and may return the message to the downstream primitive through its output terminal if configured.
- D. A Stop primitive would stop the execution and may return the message to the downstream primitive through its output terminal if configured; a Fail primitive would stop the execution, throw an exception and may return the message to the downstream primitive through its output terminal if configured.

Answer: B