

KillTest

質量更高 服務更好



學習資料

<http://www.killtest.net>

一年免費更新服務

Exam : **FM0-308**

Title : Developer Essentials for
FileMaker 13 Exam

Version : V8.02

1.What is the maximum number of files that can be hosted on FileMaker Server 13?

- A. 100
- B. 125
- C. 250
- D. 999

Answer: B

2.What is the maximum number of recursive calls that can be made utilizing a custom function in FileMaker Pro 13 Advanced?

- A. 10,000
- B. 32,000
- C. 50,000
- D. 64.000

Answer: C

3.Which statement is true about a container field set to Store container data externally in FileMaker 13?

- A. Data will not be stored externally if the file is transferred to an iOS device and used via FileMaker Go 13.
- B. Externally stored container data will not be backed up by FileMaker Server 13 scheduled backup routines.
- C. When hosted on FileMaker Server, external container data must be stored in a subdirectory of the database folder.
- D. Externally stored container data will be embedded in the file when it is downloaded via the Server Admin Console.

Answer: A

4.A text field called FirstLast in FileMaker Pro 13 is set to auto-enter the following formula:

FirstName & " " & LastName

FirstName and LastName are text fields in the same table. The option Do not evaluate if all referenced fields are empty is unchecked. The option Do not replace existing value of field (if any) is checked. Under which two circumstances will the value of the calculation be inserted into the FirstLast field?

(Choose two.)

- A. A record is first created
- B. Each time the value of the FirstName or LastName field is modified
- C. A user selects the menu item Records> Relookup Field Contents
- D. Any field value on the record is modified and the FirstLast field is empty
- E. The FirstName or LastName field is modified and the FirstLast field is empty

Answer: A,E

5.Which three field options may be set for a shadow field from an External ODBC Data Source? (Choose three.)

- A. Validation: not empty
- B. Validation: unique value
- C. Validation: existing value

- D. Auto-enter creation timestamp
- E. Auto-enter serial number, on creation
- F. Storage: automatically create indexes as needed

Answer: A,D,E

6. Consider a FileMaker 13 solution with the following tables and fields:



Assuming only the above relationships between table occurrences, using sorting if necessary, which two actions can be performed? (Choose two.)

- A. Create a value list that shows all Invoices for a chosen Customer
- B. Create a value list on a Product layout which displays all Customers
- C. Find all of the Customers who have ever ordered a specific Product
- D. Create a portal to display each Product that has been ordered by a Customer
- E. Display all records from the Customer table in a portal on a layout for an Invoice Item record

Answer: B,E

7. A table in a FileMaker 13 solution has a text field Company Name.

The following field validation options are set for this field:

- Validate data in this field only during data entry
- Allow user to override during data entry
- Require not empty
- Display custom message if validation fails

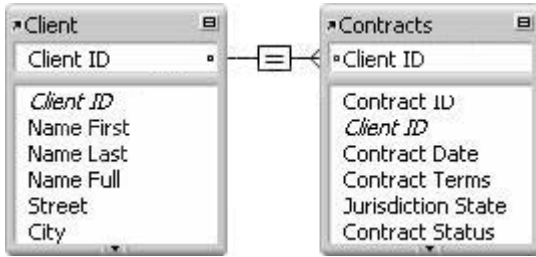
A user imports a set of records into this table. Some records have no value in the Company Name field.

What will occur?

- A. All of the records will be imported, No error message will be displayed.
- B. The user will see the custom error message, but the import will continue if the user overrides the error.
- C. All records with a value for Company Name will be imported. The user will see the specified custom message.
- D. All records with a value for Company Name will be imported. The user will see an error dialog from the FileMaker Pro application stating that some records could not be imported due to errors, along with a count of those records.

Answer: A

8. A new solution is created with two tables, Client and Contracts. The only modification made on the Relationships Graph is to establish a relationship between them which is set to delete related records in Contracts when a record in Client is deleted.



What happens when the Client table occurrence is deleted from the Relationships Graph?

- A. Since it is the only occurrence of the Client table on the graph, it cannot be deleted.
- B. Any records in the Contracts table that were related to matching Client records are deleted.
- C. The formula in the calculation field Name Full (defined as Name First & Name Last) will be broken.
- D. Any records in the Contracts table that were related to matching Client records will have values in the Client ID field deleted.

Answer: C

9. Which two FileMaker Pro 13 objects will display data contents even if unrelated to the current layout's table occurrence? (Choose two.)

- A. Merge variable
- B. Indexed timestamp field
- C. A text field from a shadow table
- D. Globally stored number field placed in a portal
- E. A container field defined with the Store as reference only option enabled

Answer: A,D

10. Which two statements are true about field indexing in FileMaker Pro 13? (Choose two.)

- A. Calculation fields cannot be indexed.
- B. Indexing improves the speed at which sorts are performed.
- C. To establish a relationship between two fields, both fields are required to be indexed.
- D. A field must be indexed in order for Auto-complete using previously entered values to function.
- E. Minimal indexing indicates that either the value index or the word index has been created, but not both.

Answer: D,E

11. Which two formatting options can be controlled by a layout's theme? (Choose two.)

- A. The anchoring / resizing settings for a tab control
- B. Conditional formatting for a value in a number field
- C. The text color of a button when tapped in FileMaker Go
- D. The inner shadow of a portal that is In Focus in Browse mode
- E. The background color of a record in List View when a mouse pointer hovers over it

Answer: C,D

12. Which statement is true about the Filter Portal Records feature in FileMaker Pro 13?

- A. The portal filter formula must refer to at least one field in the immediately related table.
- B. The feature requires one or more additional relationships to be added to the Relationships Graph.
- C. The portal filter formula may not refer to any globally stored fields, summary fields, or unstored

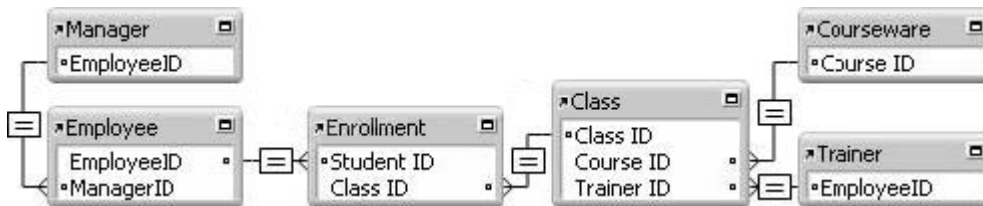
calculation fields.

D. There can be one unique filter formula applied for each portal state (Normal State, In Focus, Hover, or Pressed).

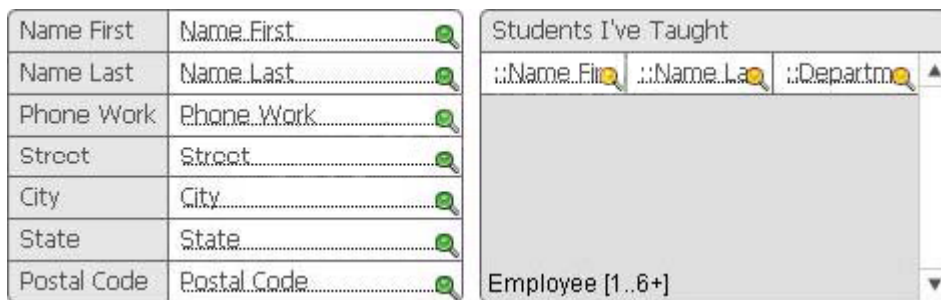
E. Aggregate functions (e.g., Sum, Count) based on the portal's relationship will not be affected by the portal's filter formula.

Answer: E

13. Given the following Relationships Graph for a FileMaker are all table occurrences sharing the same source table:



The solution has the following layout based on the Trainer table occurrence:

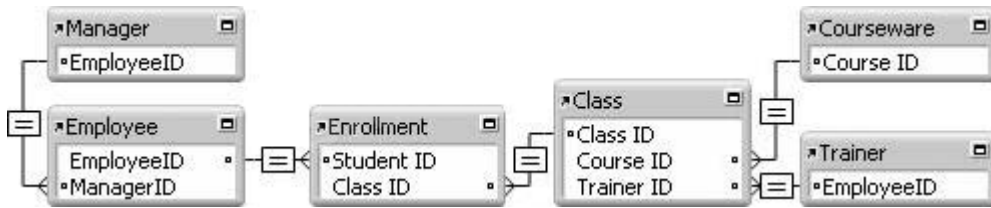


If a developer modifies the layout to be based on the Manager table occurrence instead of Trainer, what happens to the data that is displayed?

- A. The name, phone, and address fields will no longer display data, and the portal will show all employees related to the manager record.
- B. The name, phone, and address fields will change to show the manager's data, and the portal shows all employees related to the manager record.
- C. The name, phone, and address fields will change to show the manager's data, but the portal will need to be edited to Show related records from: the Manager table occurrence as well.
- D. The name, phone, and address fields will now show data for the first related trainer of the first class of the first employee of the current manager, and the portal will show all employees related to the manager record.
- E. The name, phone, and address fields will now show data for the first related trainer of the first class of the first employee of the current manager, and the portal will show all employees that have been enrolled in that trainer's classes.

Answer: D

14. Given the following Relationships Graph in a FileMaker 13 solution:



A layout is based on the table occurrence Class and a portal shows records from the table occurrence Employee.

If the field Trainer : Name is placed into the portal, what is the result?

- A. The text <Field Missing> is displayed in each row of the portal.
- B. Each row shows the name of each enrolled employee's first related trainer.
- C. The name of the first related trainer for the class is repeated in each row of the portal.
- D. The name of the trainer for the first class enrolled by the first Employee record of the portal is repeated in each row of the portal.

Answer: C

15. Which two techniques could be used to successfully generate the data points for a pie chart? (Choose two.)

- A. Concatenate multiple number fields from the current record into a return-delimited list.
- B. Set up multiple data series, each of which points to a number field in the current record.
- C. Specify a summary field from a related set of records as the data series and put the chart in a Sub summary layout part.
- D. Specify a summary field from the current found set as the data series and put the chart in a Leading Grand Summary layout part.

Answer: A,D